

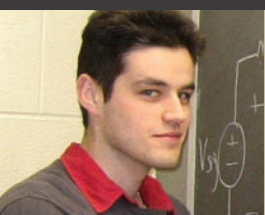
Things You Learn...

...in *Engineering*

- > **4 seconds** is a very long time.
- > 5 feet is an infinite distance.
- > 1000 Amps is **basically no current**.
- > If a problem is too hard, **assume that it is linear** and continue.
- > The more complicated the course, the worse the professor is.
- > There really **is** such a thing as a **stupid question**.
- > The prerequisite for being an ECE TA is the English lack skills of doing in.
- > **Black socks and sandals** are appropriate attire for Professors.
- > When in doubt, **integrate**.
- > Understanding is not a prerequisite for doing.
- > Not all 50 minute lectures take the same amount of time.
- > Exams may be completed in: **English, Arabic, Hindi, Chinese, or C**.
- > If you need lab help, **only ask a lab instructor**.
- > Seminar attendance usually can be counted on one hand.
- > PDEng **encourages unprofessional behaviour**.
- > PDEng markers cannot read. And those who can often miss your point.
- > **Never take dating advice** from a professor.
- > Some professors have **24/7 office hours**.
- > Nobody cares about your TPM content... only how long you talk.
- > It is possible to have a **snow day without any snow**.
- > **Zeta is not equal to three**... even though it looks like it is.
- > That **feeling of despair is normal**. You'll get used to it.
- > People continue to switch out. They may be the smartest of us all.
- > Masochism is a prerequisite for most TBEs.
- > Only at UW does a snow day mean **Saturday classes**.
- > Each prof assumes you have an infinite time to complete his/her homework.
- > **Anything can be connected to ground**, including pointers... and you.
- > If the professor tries to be your friend... **Be afraid!**
- > In every course there will be one day where after that lecture, **nothing will ever make sense again**.
- > **Every symbol has multiple meanings**, occasionally in the same equation. And they drift over time.
- > **Macs are like rabbits**... they multiply.

©2007 N. Armstrong / J. Zarnett

The bottom line — **Soul Transfer Forms** are available on the **ECE Undergraduate Website**



Surviving UW Engineering is basically all about management: Time Management, Project Management, Team Management, Failure Management, Depression Management, and Anger Management

— Jeff, Honours Computer Engineering